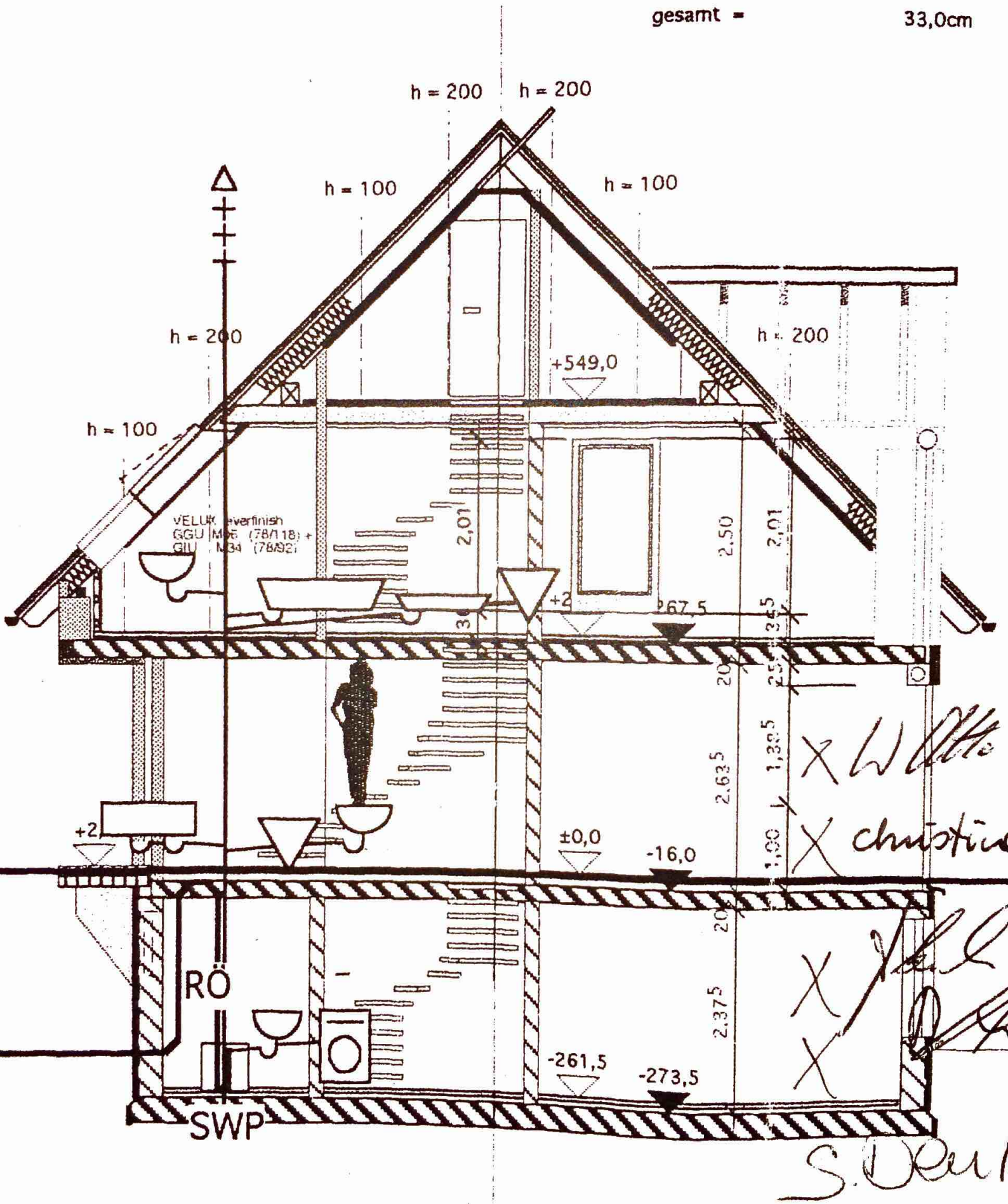
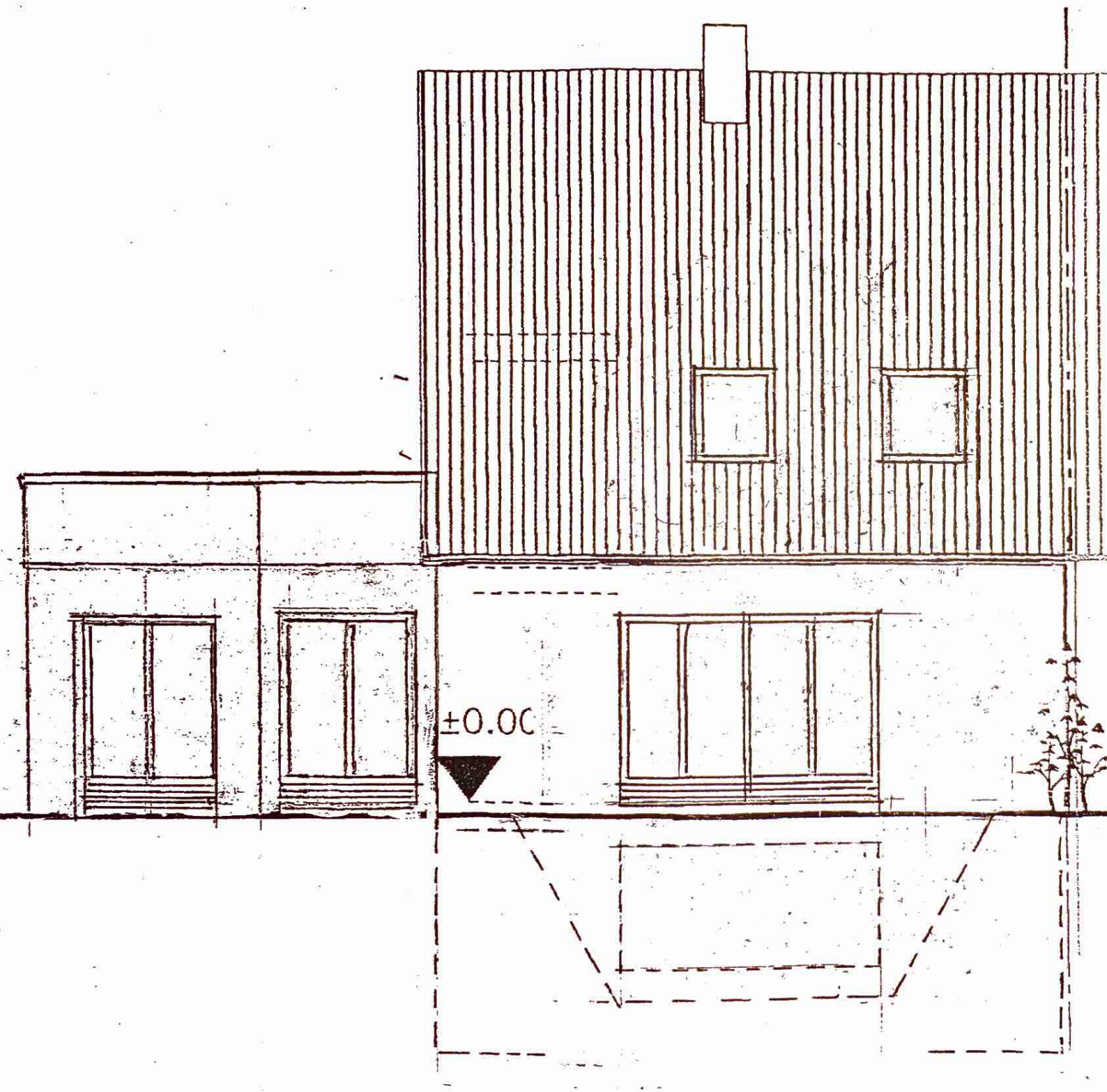
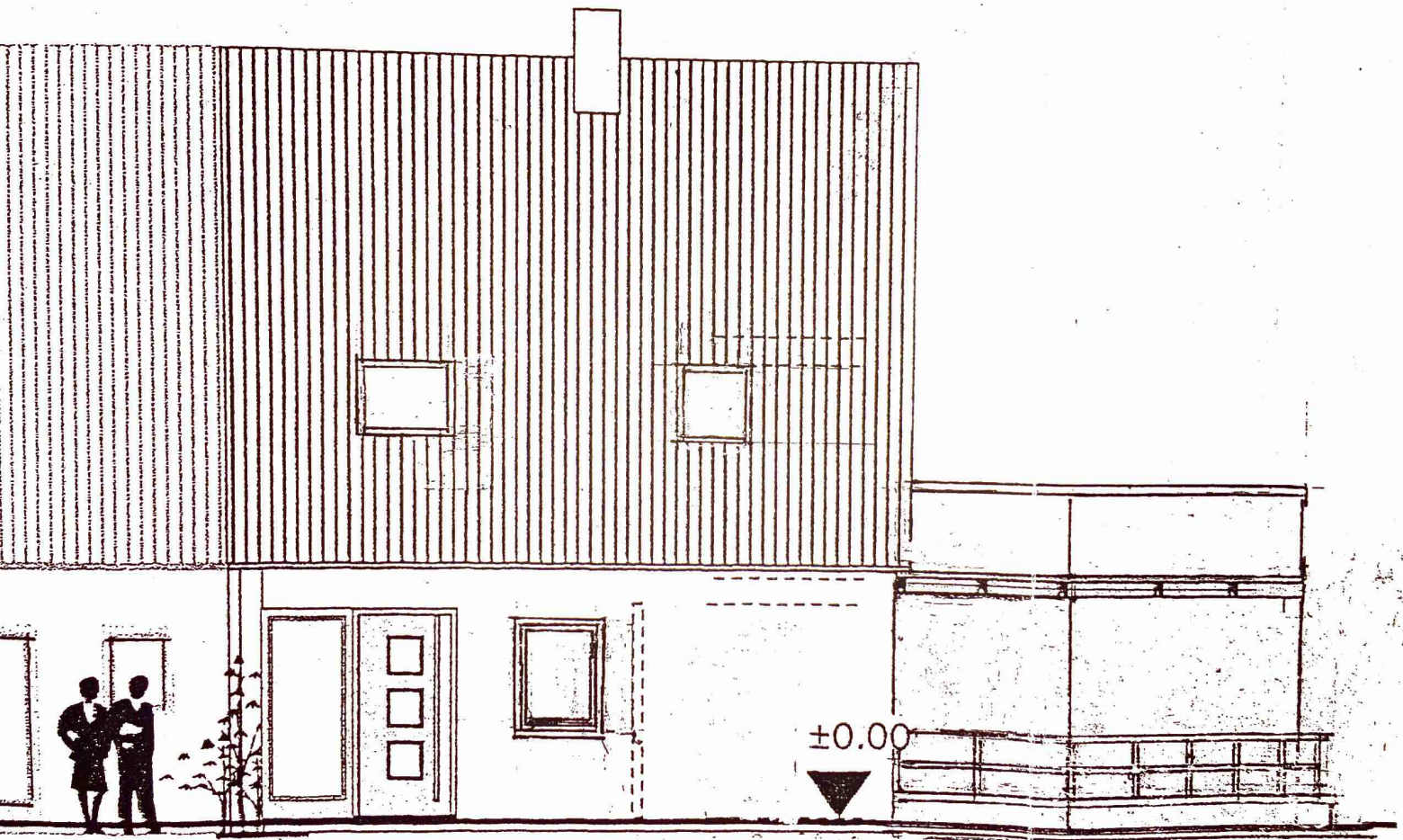


Dachneigung 45°
 Kniestock 50 cm
 Dachüberstand:
 - Traufe 30 cm
 - Ortgang 30 cm

Pavatex	2,5 cm
Sparren vollgedämmt	20,0 cm
Difunormfolie + Lattung	3,0 cm
GK-Platten	1,5 cm
gesamt =	33,0cm







$H = 4,95 \times 0,33 + 351$
 $H = 5,16$

4,95

3,515

Carport für 1 KFZ + Fahrräder

